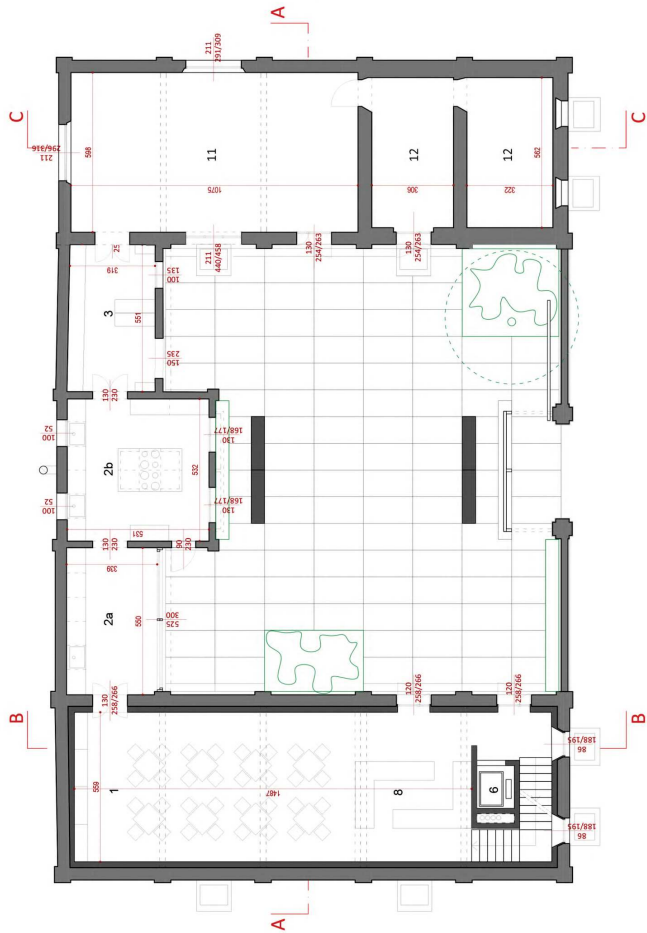
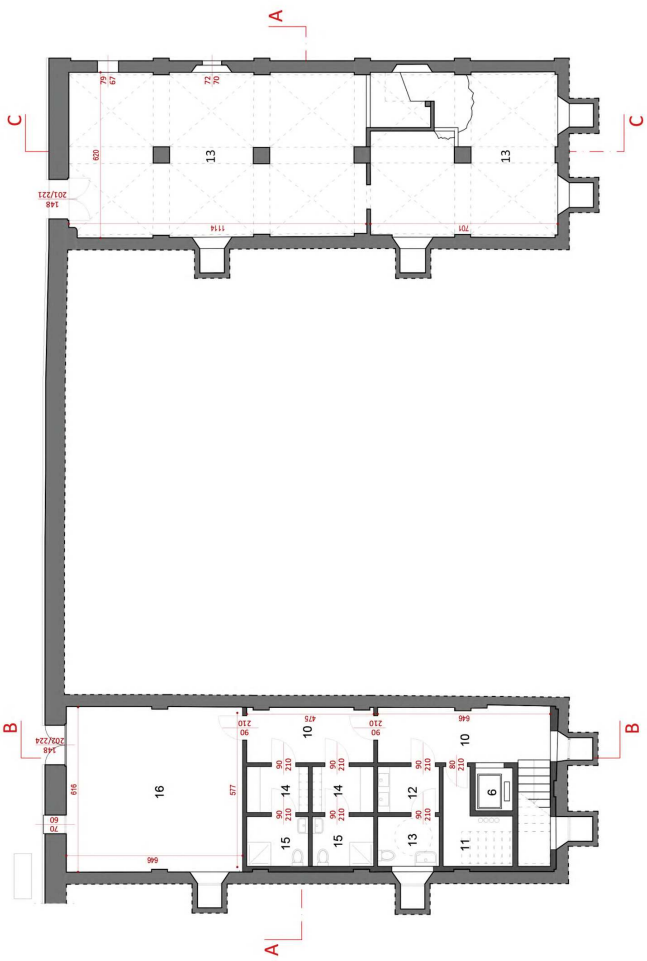




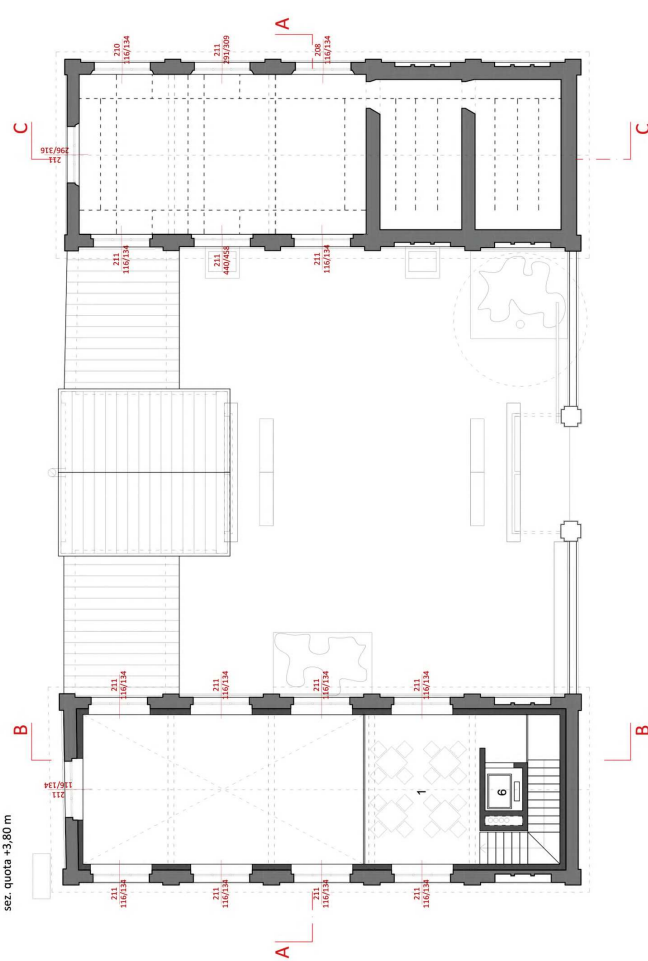
PIANO TERRA
sez. quota +1,20 m



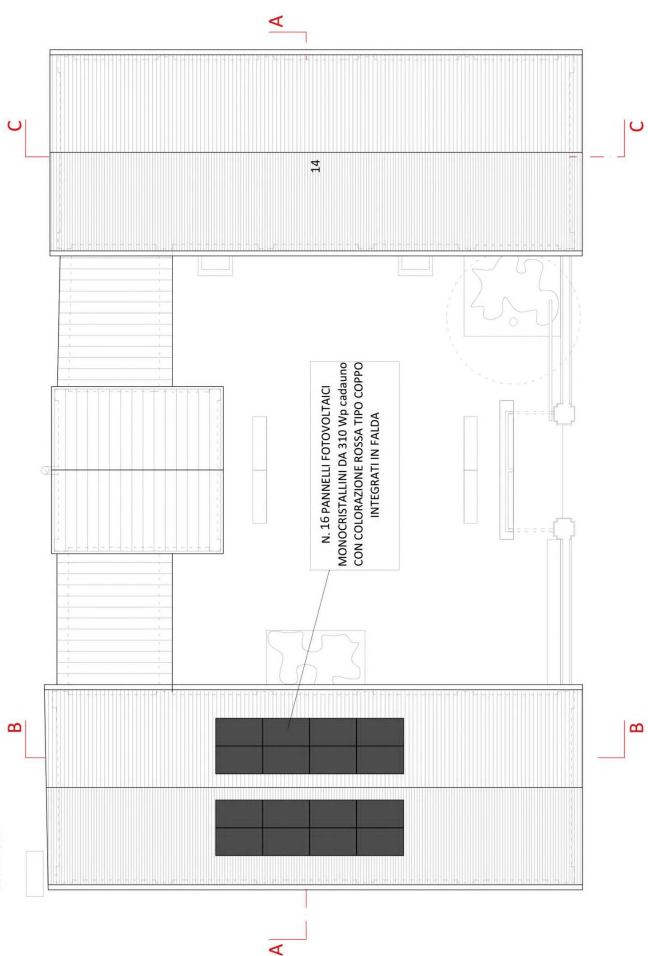
PIANO SEMINTERRATO
sez. quota -1,80 m



PIANO PRIMO
sez. quota +3,80 m



COPERTURE



- EDIFICIO OVEST E CORPO CENTRALE**
1. Sala ristorante
 2. Cucina
 3. Angolo bar e reception
 4. Magazzino alimentare
 5. Corte comune
 6. Ascensore
 7. Magazzino
 8. Bagni e spogliatoi personale
 9. Servizio igienico accessibile
 10. Locale tecnico
- EDIFICIO EST**
11. Spazio al grezzo non riscaldato per usi temporanei
 12. Depositi
 13. Cantine
 14. Copertura ripristinata